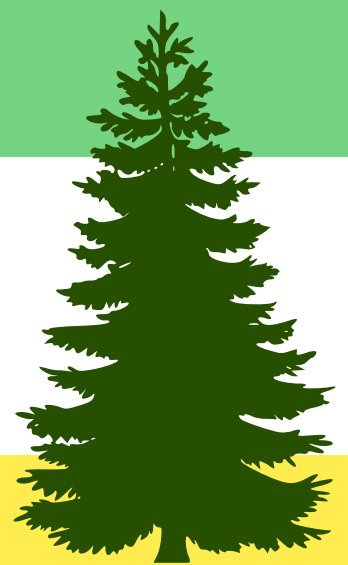




December – Tips and Tasks

Top Priorities

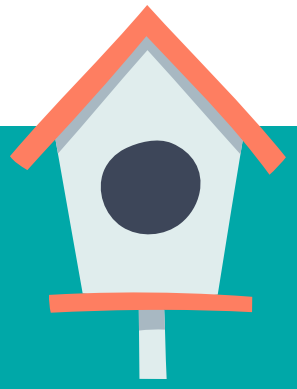
- **Protect Delicate Plants**
 - Shield sensitive plants from freezing temperatures by covering them with frost cloth or burlap. This is crucial for maintaining their health during winter.
 - Check on your tubers, if you are storing these over the winter. Move sprouting tubers to a cooler spot. Pack with peat moss to provide moisture.
- **Winter Watering**
 - Water evergreens, especially if there's a dry spell. Hydrated plants are more resilient to winter stress.
- **Tool Storage**
 - Clean and store gardening tools to prevent rusting. Keep them in a dry and sheltered area for easy access in the spring.



Next Steps

- **Mulching**
 - Add a layer of mulch around trees and shrubs to insulate the soil and protect roots from extreme temperatures.
 - Clear leaves from garden beds, as matted leaves can damage plants; chopped leaves can be returned to beds as mulch
- **Pest Control**
 - Check for signs of pests on plants. Apply dormant oil to control overwintering pests like scale insects.
- **Indoor Plants Care**
 - Pay attention to indoor plants. Adjust watering and provide adequate light to ensure their well-being during the darker winter months.





Better Impact

- **Wildlife Habitat Enhancement**
 - Install birdhouses or feeders to support local bird populations during the colder months. Consider leaving seed heads on plants for wildlife food.
- **Compost Maintenance**
 - Turn your compost pile to aid decomposition. If your compost is ready, use it to enrich the soil around your garden.
- **Garden Journaling**
 - Take this time to reflect on the past gardening season. Start a garden journal to record successes, challenges, and ideas for improvement.
 - As you plan your new garden, get a head start by ordering seed catalogs



Extras

- **Winter Interest Plants**
 - Explore and plant varieties with unique winter interest, such as plants with colorful berries or bark. Enhance the visual appeal of your garden during the colder months.
- **Winter Pruning**
 - If weather permits, perform selective pruning on deciduous trees and shrubs. This helps maintain shape and structure while promoting healthy growth.
- **Festive Garden Decor**
 - Add a touch of holiday spirit to your garden with decorative lights, wreaths, or seasonal ornaments. Create a welcoming outdoor space during the festive season.



By incorporating these December garden tips, you'll not only safeguard your garden against winter challenges but also lay the groundwork for a successful and vibrant spring.